



# Instruction Manual for Heavy Duty Clutch Kit

Item No. : 0 2 - 0 1 - 0 0 0 8

Fits : Lifan engine 1P52FM1-2B10

1P55FMJ-2E10

1P56FMJ-2E10

-----  
1P60-FMJ

1P60-5FMJ

- Thank you for purchasing one of our TAKEGAWA-made products. Please strictly follow the following instructions in installing and using the kit.
- Before installing the kit, please be sure to check the kit contents. Should you have any questions about the kit, please contact your local motorcycle dealer.

**Please note that, in some cases, the illustrations and photos may vary from the actual hardware.**

## Features

We have designed this clutch kit to have five disks, while normally the number is four, so that the kit may suit a high-power engine.

## Read all instructions first before starting the installation.

We do not take any responsibility for any accident or damage whatsoever arising from the use of the kit not in conformity with the instructions in the manual.

We shall be held free from any kind of warranty whatsoever of products other than this product if the glitch takes place on the other products than this one after the installation and use of this product.

You are kindly requested not to contact us about the combination of our products with other manufacturers'.

This product is for exclusive use with the above-mentioned engine only. Therefore, it cannot be installed on any motorcycles with other engine.

This instruction manual is prepared with those persons in mind who have basic skills and knowledge. Improper installation because of insufficient skill and knowledge could lead to parts breakage.

For the installation of this Kit, a lock nut wrench of 00-01-021 or 00-01-022) is required.

Onto this product, you can install the separately sold Clutch Cover Kit of 02-01-0014.

Please be informed that, mainly because of improvement in performance, design changes, and cost increase, the product specifications and prices are subject to change without prior notice.

This manual should be retained for future reference.



### CAUTION

The following show the envisioned possibility of injuries to human bodies and property damage as a result of disregarding the following cautions.

- Before starting the installation, make sure the engine and muffler are cool. (Otherwise, you will burn yourself.)
- Always use a torque wrench to screw bolts and nuts tight and securely to the specified torque.  
(Otherwise, these parts may get damaged or fall off, resulting in accidents.)
- As some products and frames have sharp edges or protruding portions, please work with your hands protected.  
(Otherwise, you will suffer injuries.)
- Before riding, always check every section for slack in parts like screws. If you find slack ones, screw them securely up to the specified torque.  
(Otherwise, improper tightening may cause parts to come off.)

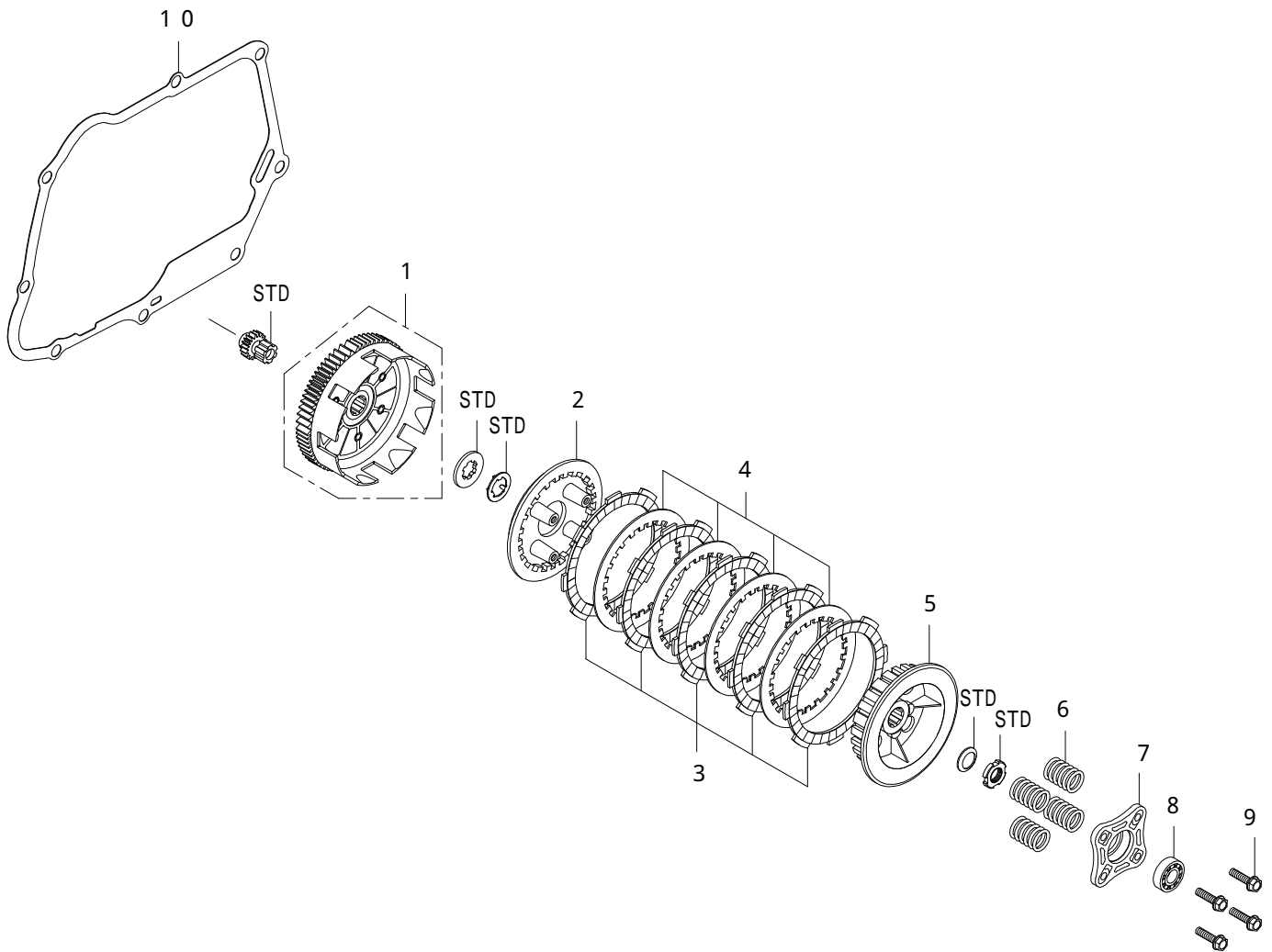


### WARNING

The following show the envisioned possibility of human death or serious injuries to human bodies as a result of disregarding the following cautions.

- Always start the engine in a well-ventilated place, and do not turn on the engine in an airtight place.  
(Otherwise, you will suffer from carbon monoxide poisoning.)
- When you notice something abnormal with your motorcycle while riding, immediately stop riding and park your motorcycle in a safe place to check what has gone wrong. (Otherwise, the abnormality could lead to accidents.)
- Before doing work, place the motorcycle on level ground to stabilize the position of your motorcycle for safety's sake.  
(Otherwise, your motorcycle could overturn and injure you while you are working.)
- Check or carry out maintenance of your motorcycle correctly according to the procedures in the instruction manual or service manual.  
(Improper checking or maintenance could lead to accidents.)
- If you find damaged parts when checking and performing maintenance of your motorcycle, do not use these parts any longer, and replace them with new ones. (The continued use of these damaged parts could lead to accidents.)
- As gasoline is highly flammable, never place it close to fire. Make sure that nothing flammable is near the gasoline. Since vaporized accumulation of gasoline is at the high risk of explosion, work in a well-ventilated place.

## Kit Contents



No.	Part Name	Qty	Repair Part Item No.	in packs of
1	Clutch outer COMP.	1	23120-165-T20	1
2	Clutch pressure plate	1	22350-KRL-T00	1
3	Clutch friction disk	5	00-02-0026	1
4	Clutch plate	4	00-02-0029	1
5	Clutch center	1	22120-086-T00	1
6	Clutch spring	4	00-00-0172	4
7	Clutch lifter plate	1	22361-GEF-T00	1
8	Radial ball bearing, 6001	1	00-00-0021	1
9	Flange bolt, 6x22	4	00-02-0098	4
10	Right-side crankcase cover gasket	1	11394-086-T00	1

Please note that in ordering repair parts, be sure to quote the Repair Part Item No. Otherwise, we may not be able to accept your orders.

There are some parts, however, for which we are not in a position to accept your order in just the quantity to be used. In this case, please take them in the quantity packed.

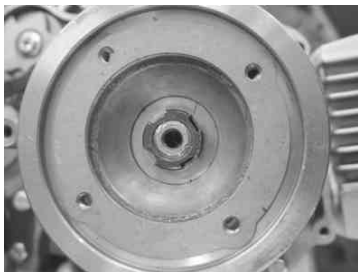
## Installation Procedures

### Disassembly:

1. Prepare an oil container, and unfasten the drain bolt to drain the engine oil.  
Pull out a right crankcase cover bolt to remove a right crankcase cover.  
Detach a case-cover gasket and two dowel pins.



2. Remove the following: Oil filter rotor cover, oil filter rotor, primary drive gear, clutch lifter plate, clutch assembly, and clutch outer COMP.

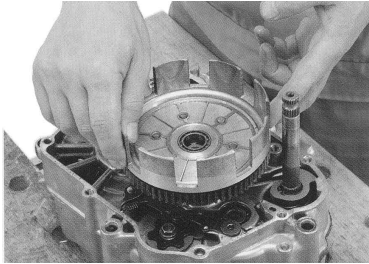


### Assembly:

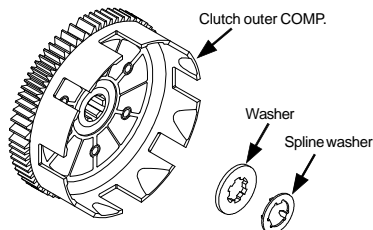
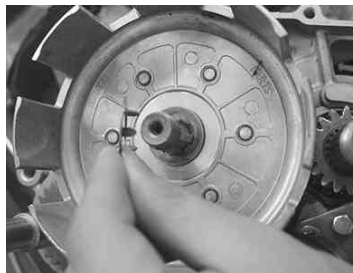
1. Install a standard primary starter gear onto the clutch outer.



2. Install the clutch outer COMP. onto the transmission main shaft.

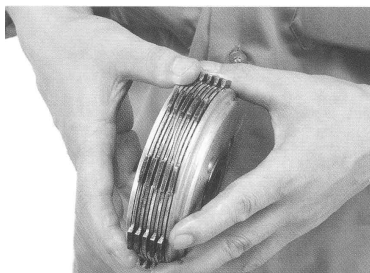


3. Install a washer and a spline washer in this order onto the clutch outer.



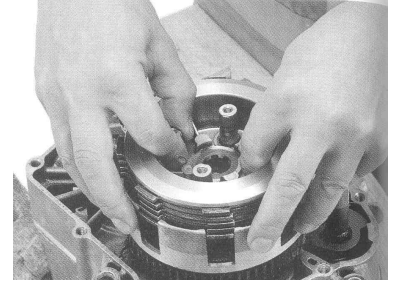
### Clutch assembly:

1. To clutch center, attach alternately one each of five friction disks and four clutch plates, and then a clutch pressure plate.  
Apply engine oil to both sides of the clutch friction disk.  
Check that the bumpy surfaces of the clutch center and clutch friction disk are meshing well with each other.



2. Attach the clutch spacer to the transmission main shaft.

Fitting the protrusion on the clutch friction disk into the groove in the clutch outer, and also fitting, at the same time, the spline on the clutch center into the spline on the main shaft, attach the clutch assembly.



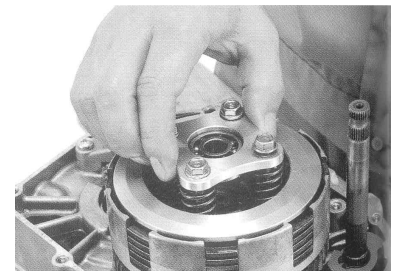
3. Install a thrust washer and a standard nut onto the main shaft.

**Torque: 39 N·m (4.0 kgf·m)**



4. Place four clutch springs into the pressure-plate boss, and fix the clutch lifter plate with a flange bolt. And tighten it to the specified torque diagonally in a few steps.

**Torque: 12 N·m (1.2 kgf·m)**



Reinstall the removed parts in the reverse order of the removal.  
Before installing our clutch cover set of 02-01-0014, first finish the installation of this product. And then install the clutch cover set as per its Instruction Manual.

**SPECIAL PARTS TAKEGAWA Co., Ltd.**

3-5-16 Nishikiorihigashi Tondabayashi Osaka Japan  
TEL : 81-721-25-1357 FAX : 81-721-24-5059  
URL : <http://www.takegawa.co.jp>